



MINISTRY OF HUMAN
RESOURCES

STATE SECRETARIAT
FOR SOCIAL
INCLUSION

[WWW. ROMAGOV.KORMANY.HU](http://WWW.ROMAGOV.KORMANY.HU)

ALL is difficult for one, **NOTHING is impossible for many.**

Count István Széchenyi

By setting up an independent **State Secretariat for Social Inclusion**, the Hungarian government elevated **the promotion of the inclusion of those living in extreme poverty and the Roma to the highest level in its governmental hierarchy as one of its top policy priorities.**

In full harmony with European traditions and guidelines and as also declared in **Hungary's new Fundamental Law** in a number of contexts, we look upon the protection of human dignity, the fight against prejudice, discrimination and segregation, the enforcement of fundamental human rights and the fight against exclusion as **immovable basic principles.**

The Hungarian government supports the social inclusion of the multiply disadvantaged with **overall, practical solutions**, with a view to creating opportunities. These are required in the interest of **labour market integration** (access to jobs, employability) and improved access to **education and health care services with equal opportunities**. At the same time, we must also further improve **housing conditions**. We seek to find sustainable solutions in the **elimination of housing segregation** and the **improvement of access to quality public services**. We are also focusing our efforts on the **elimination of child poverty**.

Improving the circumstances of the Roma and reducing the number of those living in poverty is **not just a national but also a European cause.**

We also attempt to coordinate the national and pan-European measures adopted with a view to social inclusion and integration at **European level**, and seek to develop methods for the most effective possible utilisation of the available funds.

INCLUSION POLICY

international and local government priority

2010

Establishment of an independent State Secretariat for Social Inclusion

2011

Outstanding achievements of Hungary's EU Presidency:

- The European Commission approved the EU Framework for National Roma Integration Strategies [COM (2011) 173]
- Combating child poverty: Adoption of Council Conclusion at EPSCO meeting

2011

Hungary drafted and submitted its National Social Inclusion Strategy to the European Commission as the first among Member States

2013

The concept of social inclusion was incorporated into the Fundamental Law [Article XV(4)]

Updated version of the National Social Inclusion Strategy

INCLUSION POLICY **legislation**



FUNDAMENTAL LAW

A provision relating to social inclusion has been incorporated into the Fourth Amendment to Hungary's Fundamental Law

EQUAL OPPORTUNITIES, EQUAL TREATMENT

New legislation for the drafting of local equal opportunities programmes has been passed

– on multiple levels: statutory legislation, government decree and ministerial decree

EQUAL OPPORTUNITIES IN EDUCATION

Measures designed to promote equal opportunities in education and availability of funds for teachers

SURE START CHILDREN'S CENTRES

System-level integration of children's centres creating equal opportunities at the earliest age. As of 2014, we provide funding for terms of 3 years not only for children's centres operated by municipalities but also for children's centre facilities operated by civil organisations and churches



INCLUSION POLICY **legislation**



BENEFITS FOR LIVING

Benefit available during the term of training provided for the re-integration of disadvantaged adults into the labour market



“FOR THE ROAD” SCHOLARSHIP PROGRAMME

Seeks to provide improved opportunities for disadvantaged learners

- Road to Secondary School
- Road to School-leaving Exam
- Road to Higher Education
- Road to Vocation



TAX-FREE SCHOLARSHIP GRANTS

The scholarship grants provided by Roma specialisation colleges are tax-free

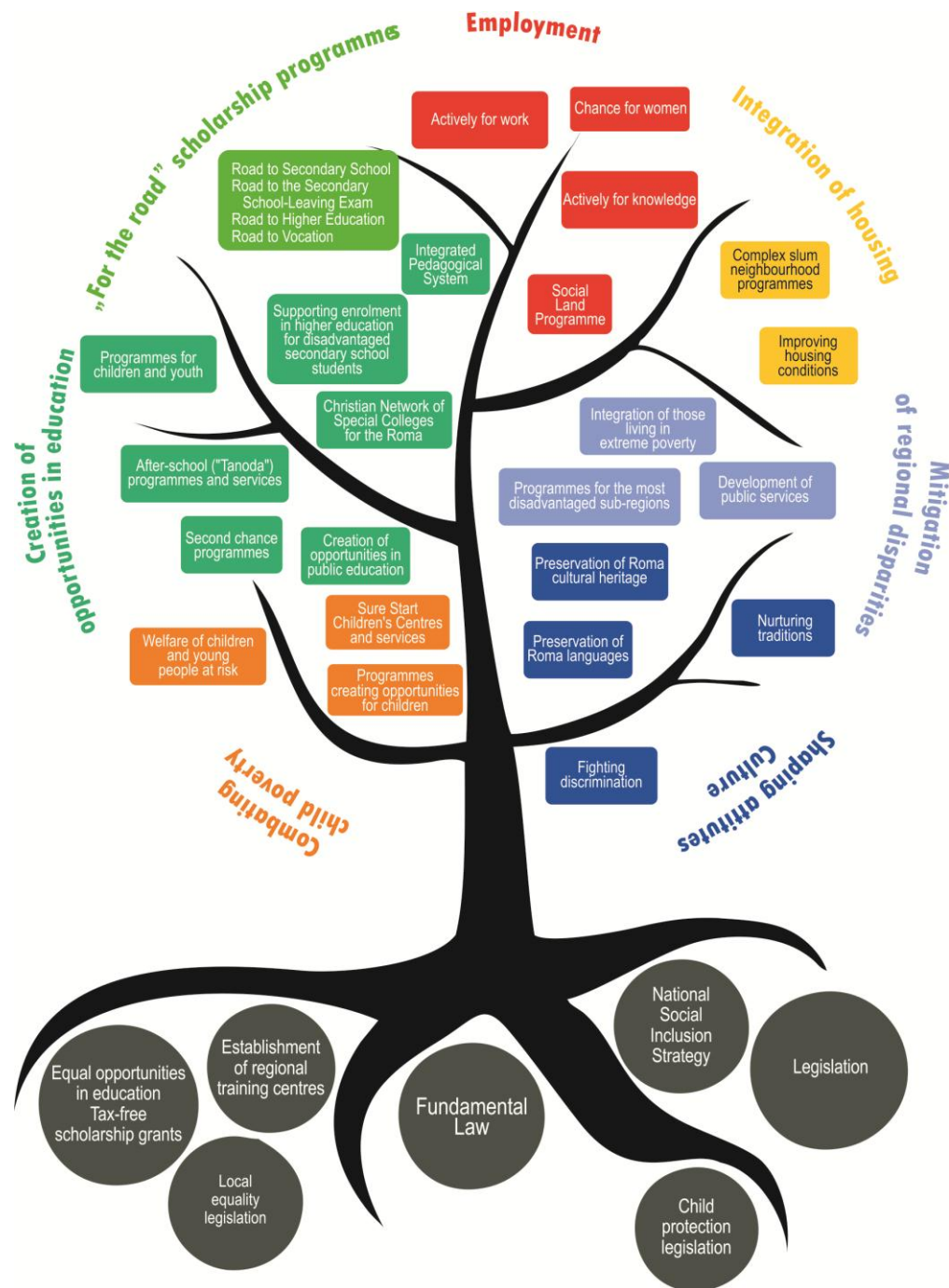
SYSTEM OF REGIONAL TRAINING CENTRES

Establishment of a nationwide support institution for overseeing adult training and providing training for those living in disadvantaged regions for their social inclusion

PROGRAMMES CREATING OPPORTUNITIES

DIRECTIONS AND GOALS OF INTERVENTIONS

- Combating child poverty and improving children's opportunities in education
- Reinforcing the employability and independent life management skills of disadvantaged people, including Roma
- Integration of people living on segregated estates
- Offering programmes promoting regional integration
- Providing professional and methodological support for inclusion and equal opportunities developments
- Promoting Roma culture, shaping attitudes, combating discrimination



Combating child poverty

Child welfare



From sure start to sure future

- Sure Start Children's Centers

Integrated regional programmes to improve the inclusion chances of children and their families

- Intervention from the earliest age, involvement of family members

Improving the welfare of children and young people at risk

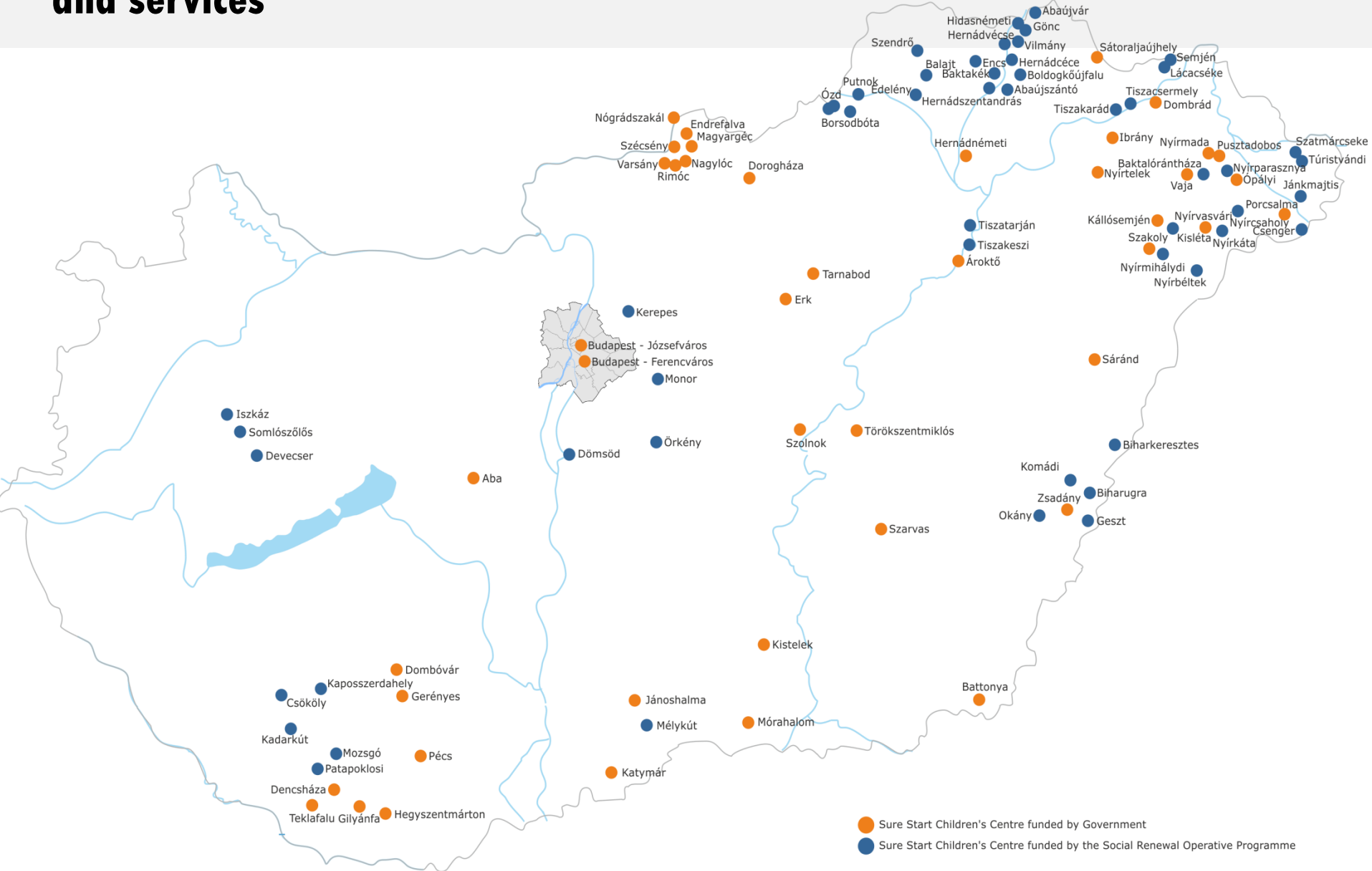
- Preventing early school-leaving among Roma girls
- Developing communal and integrated services in disadvantaged regions

In addition to a complex approach, it is fundamental that we create genuine opportunities for disadvantaged children **at the earliest possible age.**

The support chain extends from birth all the way to university; it keeps track of the individual's path in life. The programmes targeting various generations constitute the links providing a strong protective net for disadvantaged people and offer them firm support.

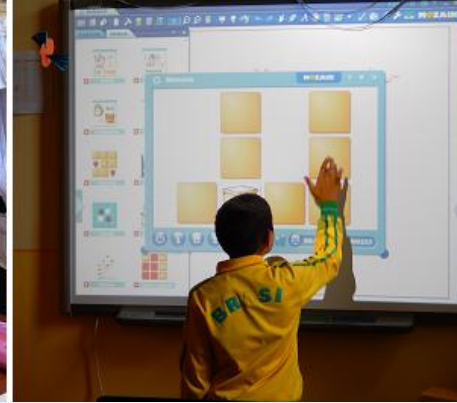
The Sure Start Children's Centres were integrated into the system in 2012. In the first half of 2013, these facilities were visited by some 6,300 children and their parents. Between 2012-2015 the integrated programme implemented in the 23 most disadvantaged micro-regions **will provide help for at least 20,000 children and will also involve their parents.** A targeted programme was launched at the beginning of 2014 to create opportunities for Roma girls at risk.

Sure Start Children's Centres and services



Source: Ministry of Human Resources, 2013

Creating opportunities in education



Integrated Pedagogical System

- The most extensive educational programme targeting inclusion within the system of public education
- Mandatory kindergarten attendance from the age of 3, rather than 5 at present

“For the Road” scholarship programme

- Scholarship grants and mentoring services provided for some 20,000 children and students
- Half of those scholarship holders are Roma

Alternative learning facility and second chance-type programmes

- Extra-curricular methods to reduce under-performing students’ dropout rates

One of the Government’s priority goals is to ensure that all Roma complete elementary school, Roma in larger numbers attend secondary school and pass their school-leaving examinations, and Roma youths also profit from vocational education.

Programmes designed to promote social inclusion must – in addition to improving the chances of children living in poverty in starting a career and a better life – also enhance the chances of their advancement in school, thereby laying the foundations for their prospective labour market positions.

For the first time in the history of Hungarian public education, the **culture of national minorities, including the Roma**, as well as the opportunities inherent in and the problems of co-existence, emerge in the **National Curriculum**.

The **Integrated Pedagogical System** promotes the more effective education of disadvantaged children **in more than 1,700 public education institutions**.

Creating opportunities in education

Projects promoting the continuation of studies in higher education

- Christian Network of Special Roma College Network

Projects creating opportunities in public education

- Equal opportunities-centred development of public education institutions
- School Net Programme
- Local and international twinning relations
- Development of pedagogical-professional service institutes

Innovative child-youth programmes

- Musical integration programme
- Complex school physical exercise programmes
- Enhancing social inclusion through sport



For the Road – “MACIKA” results	2011/2012 school year	2012/2013 school year	2013/2014 school year	Total
Road to Secondary School	5 926	7 338	5 273	18 537
Road to School-leaving Exam	3 376	6 126	5 557	15 059
Road to Vocation	2 120	3 172	3 133	8 325
Road to Higher Education	-	57	330	387
Number of disadvantaged learners:				42 308
Of Roma origin	6 849	9 235	7 574	23 658
Number of mentors	5 535	7 350	7 674	20 559

IPS results	2010/2012 school years	2012/2013 school year	2013/2014 school year
Skills development, integration skills	74 295 MD learners	78 626 MD learners	157 non-state institutions (7961 children, 993 teachers) 905 state (“KLIK”) schools (69 381 children)
Kindergarten development programme	20 864 MD children	25 269 MD children	
Teachers' supplementary remuneration	14 957 teachers		

Employability Employment



Social Land Programme

- For households living in extreme poverty in provincial environments, including Roma. Promoting self-sufficiency and independent living. Facilitates entry into labour market by promoting a work culture and mobilising the participants.

Access to markets

- Helping organisations also engaged in agricultural production to gain access to the markets by providing aid for the procurement of equipment.

Programmes specifically targeting the Roma

Training individuals participating in public works programmes, providing competence development and training for disadvantaged people

We have transformed and extended our social land programme, which is a unique scheme in European social policy.

The **social land programme** is a conventional tool designed to create opportunities for disadvantaged families, including Roma families in large numbers, living in environments suited to agricultural production which has been extended to the entire country and has been combined with the public works schemes.

We **assist the employability and independent life management** of disadvantaged people, including Roma, with programmes such as the employment of Roma women as part of their training, the training of people participating in public works and the competence development and training of disadvantaged people. The living support introduced as a new means is designed to reduce training dropout rates for financial reasons.

Housing integration

Complex slum neighbourhood programmes



„Trust and Work” model programme

- Integration of multiply-disadvantaged families living on segregated estates with dated educational qualifications.
- Contains social, community development, educational, health care and employment components.

Promotion of housing projects

- Alleviation of housing disadvantages
- Construction of new social rented accommodation, refurbishment and modernisation of existing buildings

Housing strategy

- Housing strategy attached to slum neighbourhood programmes

Following the **model programmes** completed in 8 locations, as part of 40 complex estate programmes, work has started in 59 segregated communities in the interest of the integration of people living in slum housing conditions.

A **housing strategy** attached to the estate programmes has been identified.

The elimination of segregated living conditions and situations involves the **elimination of disadvantages** in employment, living, schooling, health care and housing as well as disadvantages of a communal, socio-cultural and discriminatory nature that have persisted for generations by providing coordinated and integrated support on an ongoing basis, with the active involvement of the individuals concerned, local communities, municipalities, civil organisations and churches. Ongoing professional on-site presence constitutes the foundations of these developments.

Reduction of territorial disadvantages



Complex programmes of most disadvantaged (MD) micro-regions

- Child and youth protection, local community building, employment and training of the disadvantaged
- Training people working in public services sector

Integration of those living in extreme poverty

- Preventing the regeneration and spread of extreme poverty

Experimental programme of depopulating villages

- An experimental programme is being launched as of 2014 to reverse the social and economic processes of depopulating villages

The so-called **MD programmes** designed to promote the integration of the most disadvantaged regions have continued. 25 programmes have been completed with the participation of 299 localities in the interest of the communal inclusion of people living in extreme poverty. An experimental programme has been launched to help with the integration of settlements beginning a downward path of exclusion.

A “**poverty map**” is being prepared under the auspices of the Central Statistical Office and the World Bank.

An **aid programme** was launched in 2010 in the interest of reducing the depth, regeneration and territorial spread of poverty and promoting the integration of people living in extreme poverty. The programme seeks to achieve this by improving local communal relations, adjusting to local needs certain public services – such as social and health care services and other human services – with a fundamental impact on children’s situation and chances of advancement, and mobilising the population of the given localities.

Culture

Attitude-shaping

Combating discrimination



Roma cultural programme

- Promoting Roma fine arts, literature and cultural events
- Fostering of Roma languages
- Preserving traditions and handing them down to younger generations
- Getting to know Roma cultural heritage and past
- Promoting the mutual acceptance of people coming from different cultures

Cooperation of the National Public Service University

- Drafting of curricula and training plans that promote a change of paradigm

Establishment of Roma multi-functional cultural centre and network

- Introduction of Roma culture in a fitting environment

Getting to know one another's culture serves as a means of reinforcing social co-existence. Therefore, we have supported programmes introducing Roma culture with **targeted calls for proposals**.

A cooperation scheme has been launched with the Public Service University for the drafting of **training contents** that are related to the underlying strategy and help to achieve a change of paradigm.

The establishment of a cutting-edge **multi-functional Roma centre and network** that introduces Roma culture in a comprehensive manner in a fitting environment, functions as an inclusive space and also undertakes to perform educational and training responsibilities is a major undertaking.

In 2013, we started exploring the opportunities of **combining the enhanced social responsibility of business players** with the implementation of the National Social Inclusion Strategy.